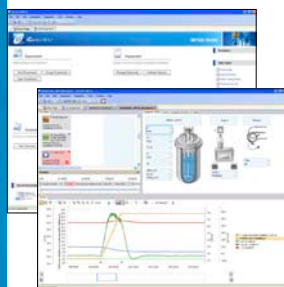


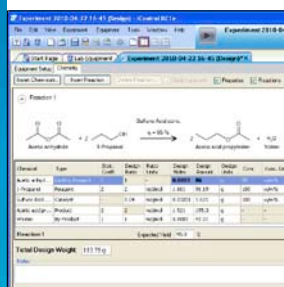
# Simply Powerful

## The Path to Safe and Efficient Processes



### Intuitive, Graphical User Interface

iControl RC1<sup>e</sup>™ uses an easy-to-learn interface that makes reactor control and experiment analysis simple. The software offers quick access to all major functions and wizards making experiments straightforward even for novice users.



### Chemistry at Your Fingertips

A powerful reaction editor is the beginning of every successful experiment. It presents the chemical equation, its stoichiometry and pulls all relevant information from the chemical database and calculates the equivalents and amounts of the reagents.



### Direct and Automated Control

iControl RC1<sup>e</sup>™ features a fully interactive equipment diagram allowing experiment procedures to be designed with simple mouse-click or drag & drop operations. Experiment procedures can be pre-programmed or created "on-the-fly" allowing full or partial automation.



### Versatile Calorimetric Information

Don't miss any thermal effects of the reaction – not even the finest ones. Sophisticated algorithms and data transformation modules provide detailed calorimetric information accurately and reliably.



## iControl RC1<sup>e</sup>™ Software

iControl RC1<sup>e</sup>™ is the simple to use, yet powerful software interface for the Reaction Calorimeter RC1<sup>e</sup>®. It combines functionality with flexibility and ease-of-operation, and seamlessly integrates with analytical tools, such as ReactIR™ and FBRM®. The intuitive software package requires significantly less training, resulting in higher productivity, saving of time, and reducing cost. Regardless of whether you are carrying out safety investigations, characterizing or optimizing sensitive and dangerous reactions or simply running routine tasks, iControl RC1<sup>e</sup>™ helps perform everyday jobs better and easier.

# iControl RC1<sup>e</sup>™ Software

## The Path to Safe and Efficient Processes

### Easy Data Collection and Instrument Control

- **Direct control** – Click on the graphical interface to change any set point any time
- **Automated creation of method** – Creates a method as you work with the system
- **Templates** – Reuse any equipment setup and procedure from previous experiments
- **Seamless integration with iC Suite** – Automatically synchronize reactor data with ReactIR™, Raman or FBRM® data
- **Real time calorimetry support** – RTCal™, the latest innovation in calorimetry from METTLER TOLEDO, generates heat release data on-line

### Intuitive Data Analysis and Visualization

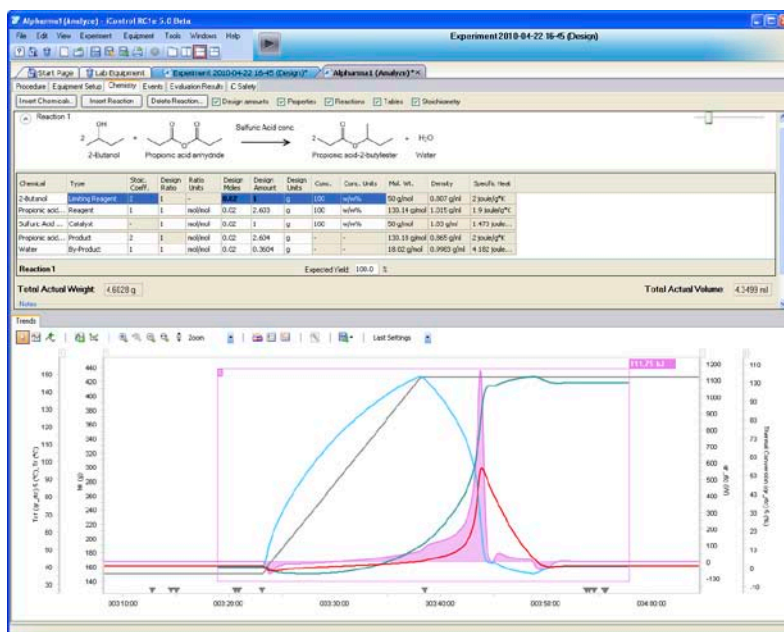
- **Start page** – Access to experiments, help file, and hardware manuals with one click
- **Multi-functional trend graph** – Display, process, analyze, and integrate trend curves as the evaluation requires
- **Experiment comparison** – Import, overlay and compare data from different experiments in one window
- **Integrated mixing guidelines** – Provides thorough understanding of mixing
- **Built-in chemical database** – Capture the properties of your reagents, solvents and catalysts
- **Reaction editor** – Define the reaction equation and the stoichiometry of your reaction and iControl dynamically calculates the amounts of the reagents and solvents
- **Preparation and analysis** – Prepare experiments and analyse data offline with the Office version (optional)
- **iC Safety™ module** – Transforms data into process safety information (optional)

### Data Exchange and Quick Reporting

- **Simple sharing** – Drag and drop trends from any iC Suite Software or copy and paste trends from any 3rd party applications, like Microsoft® Excel
- **One-click report generation** – Detailed and customizable reports in Microsoft® Word
- **Data conversion utility** – Read data from previous software versions into iControl RC1<sup>e</sup>™


### Supported Hardware

- iControl RC1<sup>e</sup>™ software supports all versions of RC1<sup>e</sup>® Reaction Calorimeter, RC1su™ and RC1sp™ workstations, Dosing Controller RD10, the Universal Control Box (UCB), and is a prerequisite for RTCal™



### PC Specifications (Minimum Requirements)

	Single iC or iControl™ Application	Multiple iC or iControl™ Application
<b>Operating System</b>	Windows® XP SP2 or Windows® Vista or Windows® 7 (64-bit version is only supported on office PC)	Windows® XP SP2 or Windows® Vista (32-bit)
<b>CPU</b>	Intel Core 2 Duo 2.2 GHz T7500 (Notebook) or 2.4 GHz E4600 (Desktop)	Intel Core 2 Duo 2.5 GHz T9300 (Notebook) or 2.8 GHz E8300 (Desktop)
<b>Memory</b>	2 GB RAM or more	3 GB RAM or more
<b>Hard Disk</b>	SATA 5400 rpm	SATA 7200 rpm
<b>Graphics</b>	SXGA 1280x1024 with 3D Acceleration	SXGA 1280x1024 with 3D Acceleration
<b>Additional Software</b>	Microsoft® Internet Explorer 7.0 or newer Microsoft® Office 2003 or newer Adobe® Acrobat® or other PDF reader	Microsoft® Internet Explorer 7.0 or newer Microsoft® Office 2003 or newer Adobe® Acrobat® or other PDF reader



**We've got you covered!**

Protect your investment in iC software by staying current with the iCare software maintenance plan.

[www.mt.com/iCare](http://www.mt.com/iCare)

Learn more about software support offerings



#### Mettler-Toledo AutoChem, Inc.

7075 Samuel Morse Drive  
Columbia, MD 21046 USA  
Phone +1 410 910 8500  
Fax +1 410 910 8600

Email: [autochem@mt.com](mailto:autochem@mt.com)  
Internet: <http://www.mt.com/autochem>

Subject to technical changes  
© 06/2010 Mettler-Toledo AutoChem, Inc.  
Printed in Switzerland, ME-51725195A

[www.mt.com/iControlRC1e](http://www.mt.com/iControlRC1e)

For more information