

# Easy, reliable, flexible data transfer

## No more transposed numbers



### No lost measurements

QuantosConnect records the dosing process, including all target weights, weighing results and substance properties. This avoids the need for error-prone manual data entry.



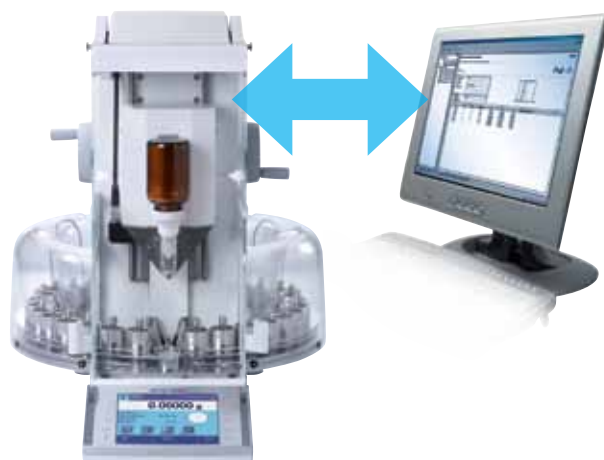
### Easy worklist creation

Quantos can fill up to 30 samples automatically and accurately with individual target volumes. Until now the only alternative was manual weighing in.



### Quantos networked

Quantos is controlled by the bidirectional QuantosConnect PC software. The software can be run from an office PC via the Intranet or from a lab PC via a COM interface.



### QuantosConnect Application software

Weighing in powder is a tedious job that is prone to error. Quantos reduces the risk of error by means of automation. Now QuantosConnect takes process reliability one step further – by automating data acquisition too: worklists containing up to 1000 dosings are easy to create and process in Quantos.

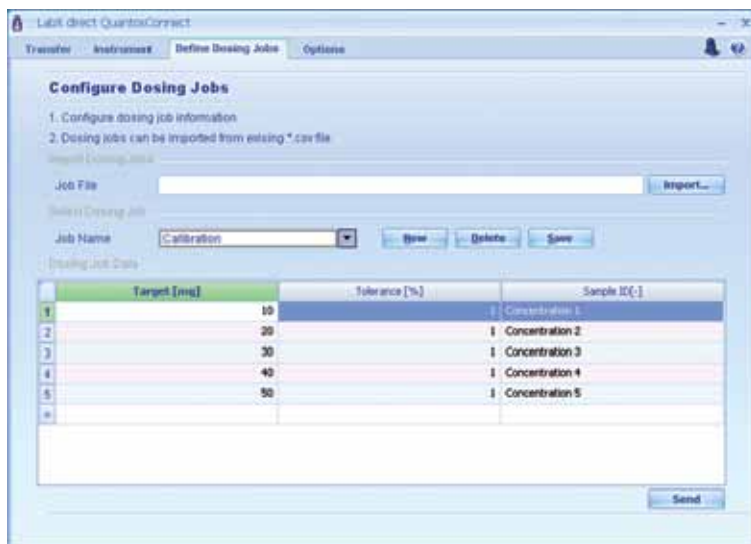
The results of the dosing process are stored in an output file and transferred to an application such as Excel. And if you are using a Quantos QS30 Autosampler to fill multiple vessels you can analyze and monitor the results as the vessels are filled.

Until now, filling large numbers of vessels with different target volumes of a substance meant hours of manual weighing. The QuantosConnect application software allows you to specify an individual target weight for each sample in a worklist. This worklist can then be sent from the office to the Quantos system in the lab via Ethernet, for example. A Quantos dosing system complete with autosampler can fill up to 30 samples automatically and accurately.

## Application examples

The data relating to 13 dosings, including actual weights, is read by QuantosConnect and is set out in here in a table:

Batch ID	User	Date	Substance	Target volume	Tolerance [%]	Sample ID	Validity	Actual weight [mg]	Duration [s]
4006381135900	LM	09.25.2010	12:16:12 Calcium carbonate	20	2	1	valid	20.200	31
4006381135900	LM	09.25.2010	12:18:34 Calcium carbonate	20	2	2	valid	20.150	34
4006381135900	LM	09.25.2010	12:21:15 Calcium carbonate	20	2	3	valid	20.080	28
4006381135900	LM	09.25.2010	12:26:43 Calcium carbonate	20	2	4	valid	20.210	29
4006381135900	LM	09.25.2010	12:27:54 Calcium carbonate	20	2	5	valid	20.100	29
4006381135900	LM	09.25.2010	12:29:09 Calcium carbonate	20	2	6	valid	20.180	28
4006381135900	LM	09.25.2010	12:30:58 Calcium carbonate	20	2	7	valid	20.210	29
4006381135900	LM	09.25.2010	12:36:24 Calcium carbonate	20	2	8	valid	20.060	28
4006381135900	LM	09.25.2010	12:38:26 Calcium carbonate	20	2	9	valid	20.310	29
4006381135900	LM	09.25.2010	12:40:15 Calcium carbonate	20	2	10	valid	20.310	28
4006381135900	LM	09.25.2010	12:42:04 Calcium carbonate	20	2	11	valid	20.120	29
4006381135900	LM	09.25.2010	12:43:22 Calcium carbonate	20	2	12	valid	20.150	28
4006381135900	LM	09.25.2010	12:44:30 Calcium carbonate	20	2	13	valid	20.140	29



Individual target volumes are entered in the QuantosConnect application software and transferred to the dosing system.

### LabX direct QuantosConnect system requirements

- Windows 2003 Server
- Windows 2008 Server
- Windows Vista 7
- 1 free COM port or TCP/IP



**Mettler Toledo AG**  
 Laboratory & Weighing Technologies  
 CH-8606 Greifensee, Switzerland  
 Tel. +41 44 944 22 11  
 Fax +41 44 944 30 60

Subject to technical changes  
 © 02/2011 Mettler-Toledo AG  
 Printed in Switzerland 11796323

[www.mt.com/quantos](http://www.mt.com/quantos)

For further information