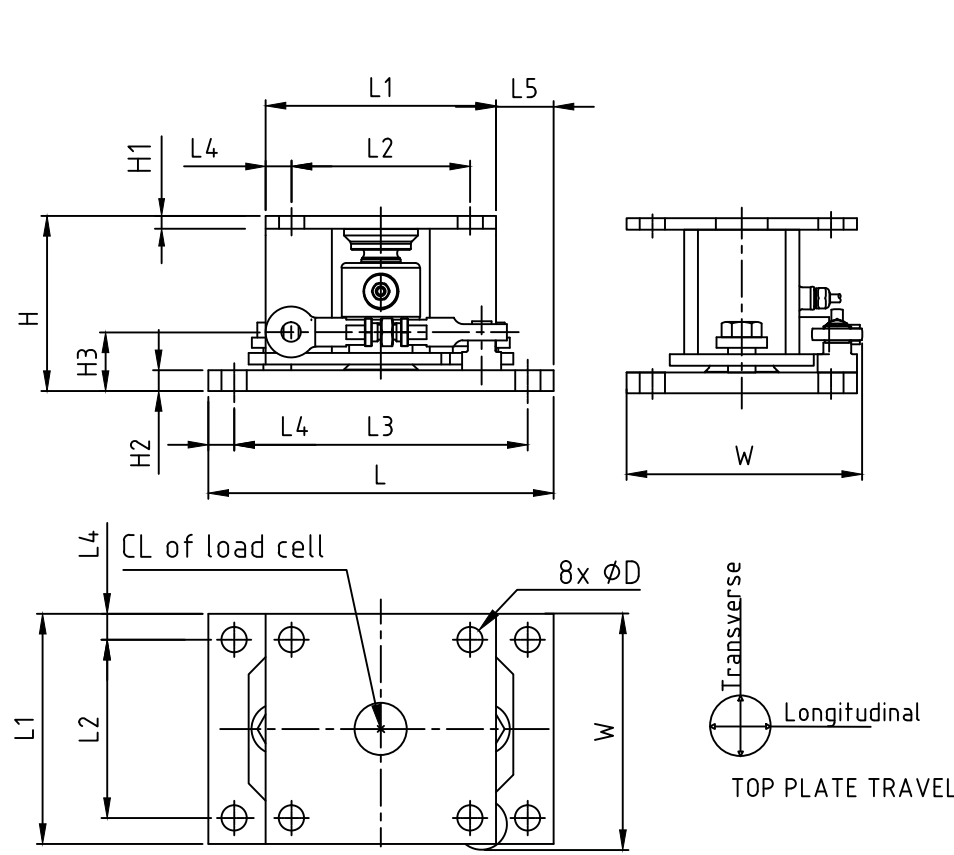
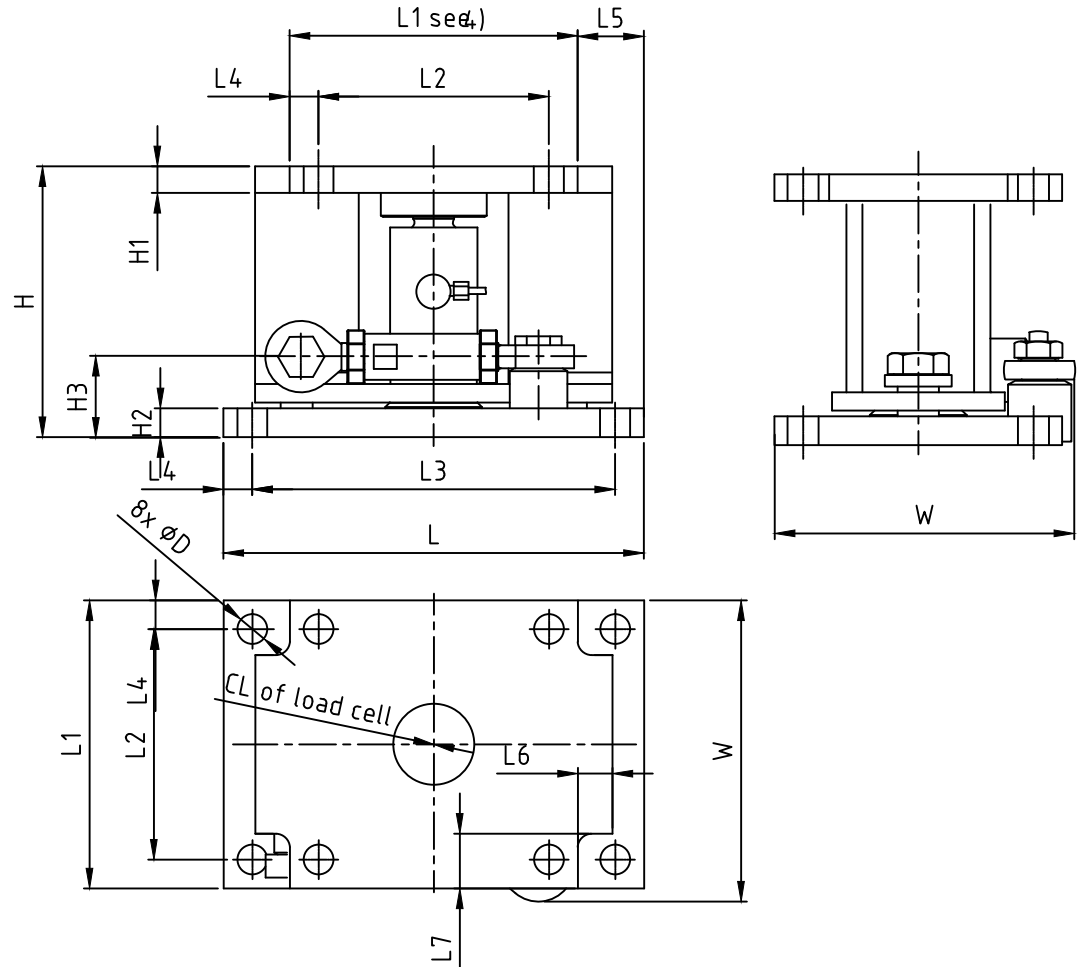


Dimensions and Location																		Top Plate Travel				Tank Leg Plate	
Size	Capacity	D	H	HS 2)	HP 1)	H1	H2	H3	L 4)	L1	L2	L3	L4	L5	L6 4)	L7 4)	W	Without Stabilizer		With Stabilizer		Min. Thickness	Dimensions
																		Longitudinal	Transverse	Longitudinal	Transverse		
1	7.5, 15, 22.5t [16.5, 33, 49.6klb]	22 [0.87]	152 [5.98]	167 [6.57]	192.4 [7.57]	11 [0.43]	18 [0.71]	51 [2.02]	300 [11.8]	200 [7.87]	155 [6.1]	255 [10.04]	22.5 [0.89]	50 [1.97]	-	-	205 [8.1]	± 5 [± 0.2]	± 5 [± 0.2]	0 [0]	± 5 [± 0.2]	25 [1.0]	200 x 200 [7.87 x 7.87]
2	20, 30, 50t [44, 66, 110klb]	26 [1.02]	235 [9.25]	268 [10.55]	293.4 [11.55]	23 [0.91]	25 [0.98]	69.5 [2.75]	365 [14.37]	250 [9.84]	200 [7.87]	315 [12.4]	25 [0.98]	57.5 [2.26]	30 [1.18]	47.5 [1.87]	261.5 [10.29]	± 5 [± 0.2]	± 5 [± 0.2]	0 [0]	± 5 [± 0.2]	50 [2.0]	250 x 250] [9.84 x 9.84]



Weigh Module, Pinmount SWC415 SIZE 1, 7.5 - 22.5t [16.5 - 49.6 klb]



Weigh Module, Pinmount SWC415 SIZE2 20 - 50t [44.1 - 110.2 klb]

- 1) Height when using themal isolation pad or shock/vibration pad
- 2) Height when using spacer plate
- 3) Shipping/Installation height is 2mm [0.08 inches] taller
- 4) Designed for square tank leg plate above top plate

NOTES:
1. DIMENSIONS ARE IN mm [inches]
2. SHOWN WITH OPTIONAL STABILIZER.
3. SHIPPING/INSTALLATION HEIGHT IS 2mm [0.08 inches] TALLER.
4. DESIGNED FOR SQUARE TANK LEG PLATE ABOVE TOP PLATE.

认证/Appro Mark	
○ Metrology	
○ Safety	
○ Ex	

GDL

METTLER TOLEDO
MTCN / MTCZ

GDL drawing weight module SWC415 PM

30396092A

版本/VER	更改号/ER.ECN.NO.	更改人/BY	日期/DATE	审核/STAGE	SP	重量/WGT	比例/SCALE
设计/DRN	Rabin	批准/APPD	ChengGang	S	A	N	1:6
审核/CHECK	Chang Pin	验证/AGEN					
工艺/MFG		日期/DATE	2017/04/19	SHEET: 第 1 页 of 共 1 页			