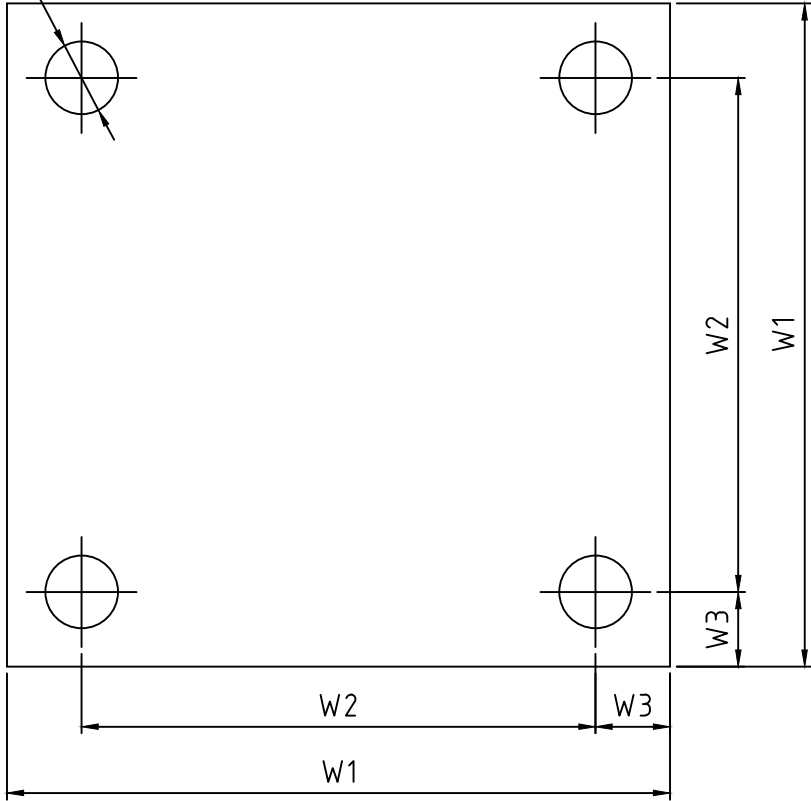
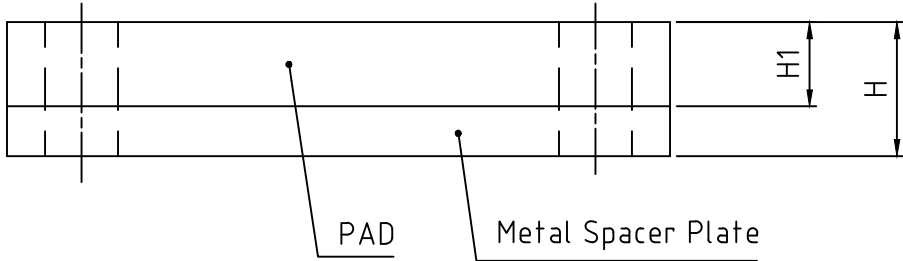


NOTES:
 1. Dimensions are in mm [inches]
 2. Warning, do not use PADS without metal spacer plate .
 3. Spacer plate must be positioned on weigh module top plate with PEI pad above.
 4. Shock/vibration pad is a synethetic rubber impregnated fabric.
 (5). Reduction in DIM H1 per Kg[lb] applied over the entire pad area.



SIZE	Capacity	W1	W2	W3	H1	D	H	shock/vibration pad deflection(5)
1	7.5-22.5t (16.5-49.6klb)	200[7.87]	155[6.10]	22.5[0.89]	25.4[1.00]	22.0[0.87]	40.4[1.59]	3.69E-5mm/kg [6.59E-7in/lb]
2	20-50t (44.1-110.2klb)	250[9.84]	200[7.87]	25[0.98]	25.4[1.00]	26.0[1.02]	58.4[2.30]	2.35E-5mm/kg [4.20E-7in/lb]
3(A)	90t-100t (198.4-220.4klb)	300[11.81]	235[9.25]	32.5[1.28]	25.4[1.00]	32.0[1.26]	63.4[2.50]	1.64E-5mm/kg [2.93E-7in/lb]

MATERIAL PROPERTIES	UNITS	PEI	Shock/Vibration	Acetal
Max. Continuous Service Temperature:	degree F [degree C]	340 [171]	200 [95]	180 [82]
Thermal conductivity:	Btu-in/hr-sqft-F [W/mK]	0.85 [0.12]	-	1.6 [0.23]
Coefficient of thermal linear expansion:	/ degree F [/ degree C]	3.1E-5 [5.6E-5]	-	5.4E-5 [9.7E-5]
Compressive strength:	psi [MPa]	22000 [152]	12000 [82.7]	15000 [103]
Damping Constant:	-	-	0.14	-

				GDL					METTLER TOLEDO	
									MTCN / MTCZ	
									GDL SWC515 PM PADS	
C		Zhu.L	2013.07.09							
版本/VER	更改号/ER	ECN.NO.	更改人/BY	日期/DATE	图样阶段/STAGE	SP	重量/WGT	比例/SCALE		
设计/DRN	Ji zhengw	审核/APPD			S	A	N		1:2	72261780C
审核/CHECK	heng Ji	批准/AGEN								
工艺/MFG	Gu YeXia	日期/DATE	2007-12-18	SHEET: 第 1 页 of 共 1 页						