

METTLER TOLEDO

BC Scale

Setting up the Scales for Ethernet:

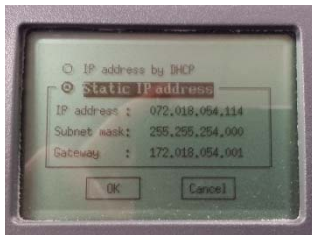
1. Select the correct Serial protocol setting.

Home → Deflt → Def F → Enter

2. Update Ethernet IP setting

Home → Setup → COMM → ETH
Press Enter.

Note: A default static IP setting has been programmed into the scale



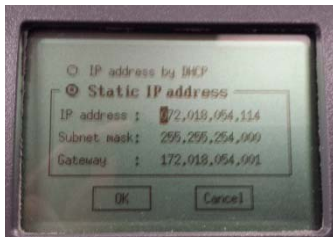
Press UP/DOWN key to select

- IP address by DHCP
(currently not supported)
- Static IP address
- OK
- Cancel

3. Update static IP address:

Highlight the static IP address field

Press Enter key



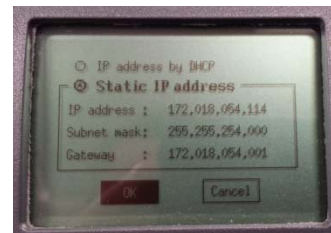
- Press RIGHT/LEFT key to scroll through the octet or ENTER to scroll through each IP address, subnet, and gateway setting.

- Press UP/Down key to change IP address octet values, example; (192.168.000.002)

4. Save updated static IP address:

Place cursor to the first octet of the IP address and press LEFT key.

Press the Down key to OK then press Enter



METTLER TOLEDO

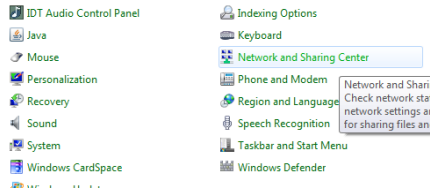
BC Scale

Setting up the network connections on PC:

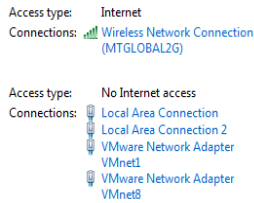
1. Open Control Panel



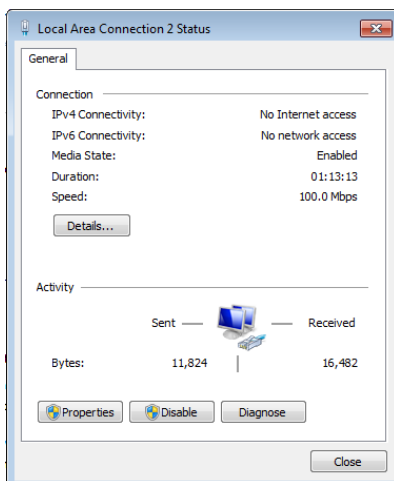
2. Select Network and Sharing Center



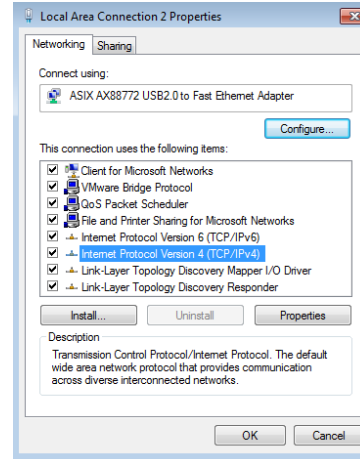
3. Select the desired Local Area Connection port. Local area connection statuses will pop-up.



4. Open Properties

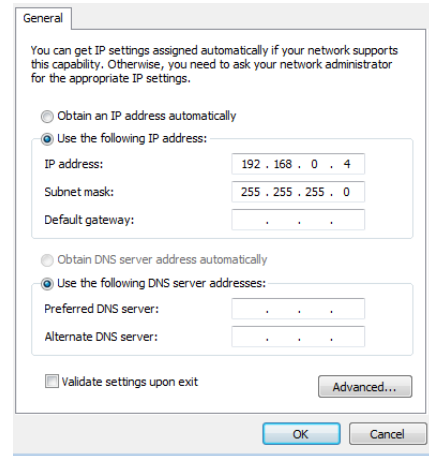


5. Select Internet Protocol Version 4 (TCP/IPv4)



6. Open Properties. Enter the correct IP, Subnet Mask, and gateway address → click OK

Note: When using static IP addresses, please enter the same IP address as programmed in the scale.



7. Close Local Area Connection properties
8. Close Local Area Connection Status
9. Close Control Panel window

METTLER TOLEDO

BC Scale

Test Ethernet Connectivity:

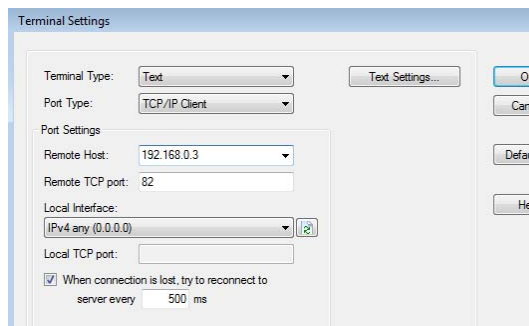
1. Open Windows Command Prompt.
Type PING 192.xxx.xxx.xxx (type the correct IP address that is programmed into the scale)
If connection and setting are correct, the port will reply as shown in the example below.

```
C:\WINDOWS\SYSTEM32>ping 192.168.0.3
Pinging 192.168.0.3 with 32 bytes of data:
Request timed out.
Reply from 192.168.0.3: bytes=32 time=1ms TTL=128
Reply from 192.168.0.3: bytes=32 time=1ms TTL=128
Reply from 192.168.0.3: bytes=32 time=2ms TTL=128

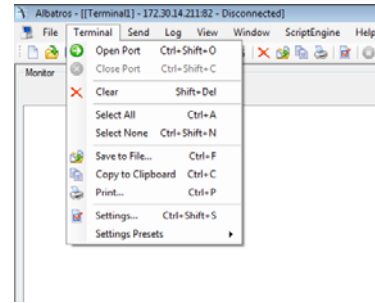
Ping statistics for 192.168.0.3:
    Packets: Sent = 4, Received = 3, Lost = 1 (25% loss)
    Approximate round trip times in milli-seconds:
        Minimum = 1ms, Maximum = 2ms, Average = 1ms
C:\WINDOWS\SYSTEM32>
```

Test Scale Serial Communication :

1. Set the desired Serial Protocol on scale.
This is important to ensure the command sent to scale will function correctly; otherwise the scale will not respond to incorrect Host commands.
2. Set COMM selection on scale to ETH and SAVE setting.
3. Open serial tool like Albatros or Hyperterminal and set the correct Port Type, IP address, and Port setting. Click OK.



4. Open Terminal Port



5. Enter Serial Protocol supported command

