

**Pit construction diagram  
00703609D**

**METTLER TOLEDO**

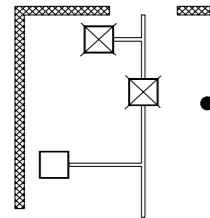
METTLER TOLEDO MultiRange  
Dry pit (part 1)  
**KD/MD/KE/ME/KES/MES - line**

Subject to technical changes © Mettler-Toledo (Albstadt) GmbH Printed in Germany 05/04 english

**Standard equipment**

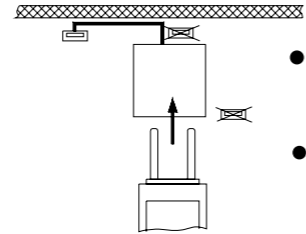
- 2 Pit angle, lengthwise
- 2 Pit angle, crosswise
- 4 Hex bolts M12x30 DIN 933
- 4 Nuts M12 DIN 934
- 1 Pit construction diagram
- 8 Clipping plates by KES/MES
- 6 Clipping plates by KD/MD/KE/ME

**1. Determine location of weighing platform**



- Load-bearing capacity of pit base:  
min. 1700kg / 25cm<sup>2</sup>

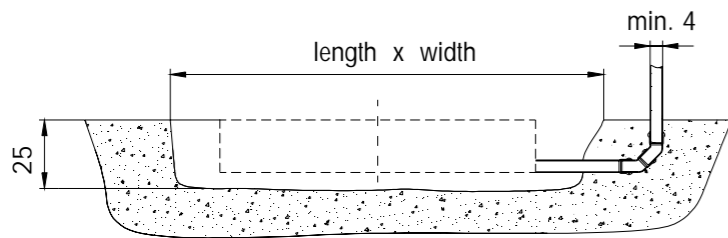
**2. Determine location of terminal**



- Set up terminal to ensure good access.
- Length of connection cable terminal 5 m (standard).

**3. Prepare framework pit**

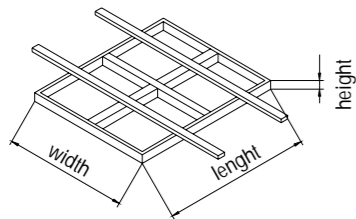
- Excavate framework pit as specified in the table below, depth approx. 25 cm.
- Excavate channel of depth approx. 23 cm for cable conduit. The cable conduit ends in the base of the pit (see illustration).
- Pipe diameter min. 4 cm.  
Do not use a right-angled pipe, rather two pipes of 45°



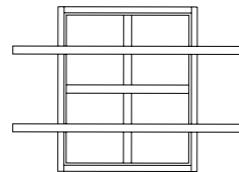
weighing platform	length	x	width
KD/MD	165	x	140
KE/ME	190	x	165
KES/MES	190	x	190

**4. Concrete forming**

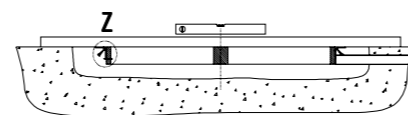
a) Prepare stable wooden frame. Check that the frame is rectangular. Check diagonal. Dimensions see table.



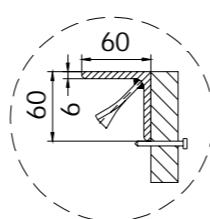
b) Assemble steel pit frame, and fasten to wooden frame with nails.



c) Install wooden frame together with pit frame in the framework pit. The pit frame must be leveled exactly.



Detail Z

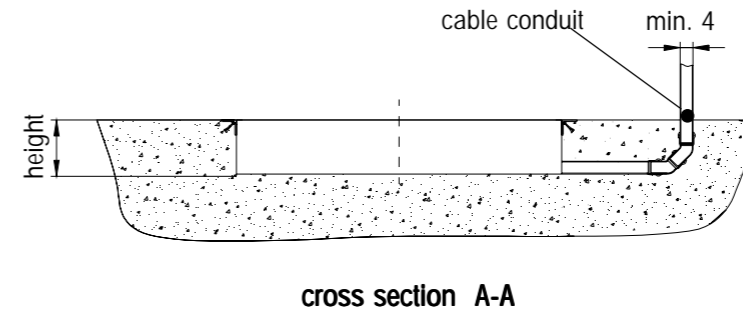


weighing platform	length	x	width	x	height
KD/MD	127	x	102	x	20
KE/ME	152	x	127	x	20
KES/MES	152	x	152	x	22

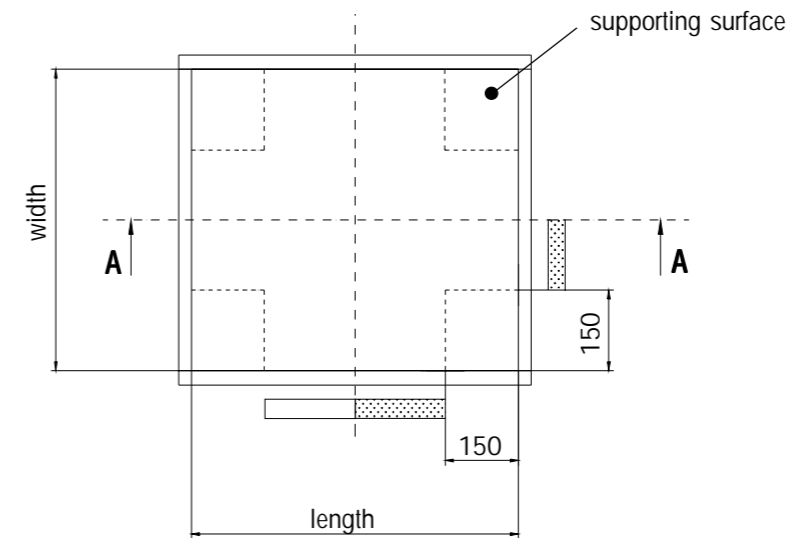
**5. Dimension drawings**

**Pit construction diagram 00703609D**  
Dry pit (part 2)  
**KD/MD/KE/ME/KES/MES - line**

**5.1 Dry pit**



Dimensions in cm



**Position for cable conduit**

- ideal
- possible

**Dimensions pit frame**

weighing platform	length	x	width
KD/MD	127	x	102
KE/ME	152	x	127
KES/MES	152	x	152