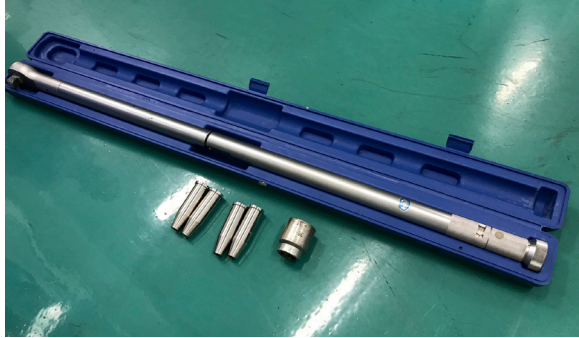


1 Required Tools

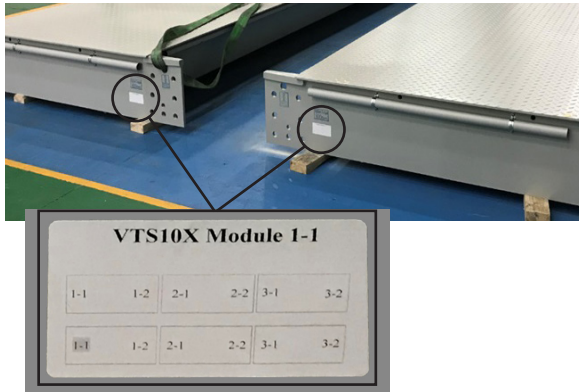
Standard Tools
 Crane or forklift (capacity of at least 5t)
 Jack (capacity of at least 3t)
 Wooden blocks (at least 40cm x 20cm x 20cm)
 Socket wrench or pneumatic wrench (M24)

Special Tools
 Torque wrench (for torquing bolts to 600 N·m)
 Mounting pins (4 x Ø26.5mm)
 MT SAP number: 30461460



2 Identify the Modules


- ① Remove the modules from the shipping container, and place them on a flat, stable surface.
- ② Each module is supplied as two halves that must be bolted together. Identify the two halves of a module by the labels on the end plates. Each pair of half-modules will have identical labels.



VTS10X Module 1-1					
1-1	1-2	2-1	2-2	3-1	3-2
1-1	1-2	2-1	2-2	3-1	3-2


3 Position Two Half-Modules

- ① Use a crane or forklift to set two matching half-modules next to each other. If necessary, jack up the half-modules so that they are at the same level.



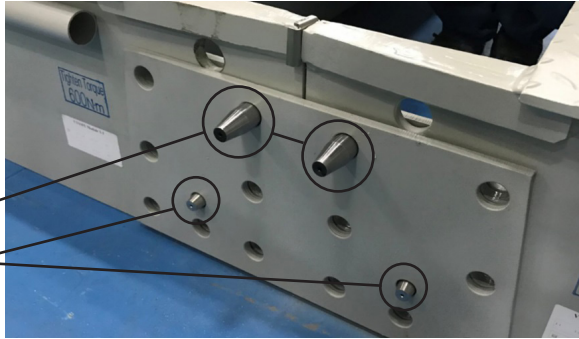
4 Position the Inside Connection Plate

- ① Position a connection plate on the inside of the module's end plate.
- ② Align the plate's bolt holes with the holes in the two half-modules.




5 Insert the Locating Pins

- ① Insert two small locating pins (Ø22mm) in the holes (as shown in the picture).
- ② Insert two large locating pins (Ø26.5mm) in the holes (as shown in the picture).



6 Position the Outside Connection Plate

- ① Position another connection plate on the outside of the module's end plate.

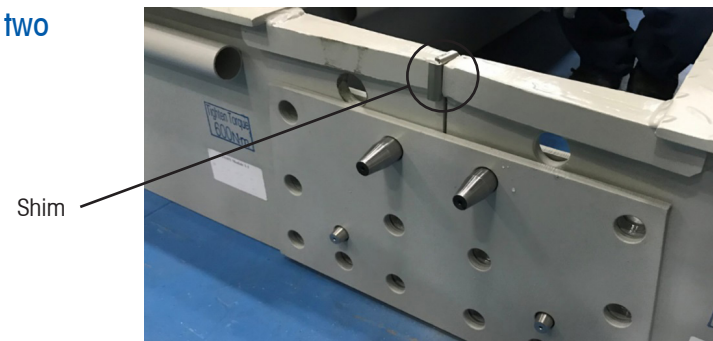


VTS10X Weighbridge » Module Assembly Guide

7

Insert the Shim

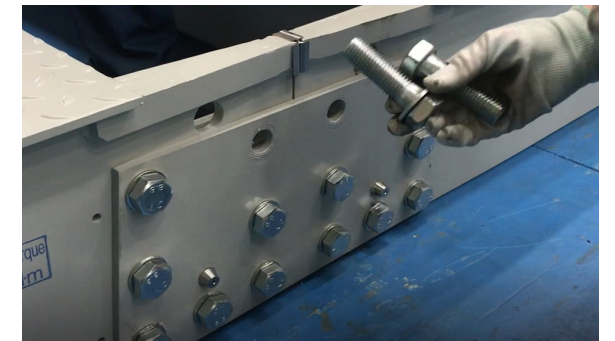
- 1 Insert a shim to fill the gap between the two end plates.



10

Install the Last Two Bolts

- 1 Remove the two large locating pins at both end plates, and replace them with M24 bolts.
- 2 Tighten the bolts to a torque of 600 N·m.
- 3 Double-check that all bolts are torqued to 600 N·m.



8

Install the Bolts

- 1 Insert an M24 bolt through each hole with the bolt head and washer on the outside of the module (washer and nut on inside).
- 2 Pre-tighten the bolts manually or with a pneumatic wrench.
- 3 Repeat steps 4-8 at the opposite end plate.



11

Assemble the Remaining Modules

- 1 Connect the remaining pairs of half-modules, using the procedure described above.
- 2 The assembled modules are now ready to be installed on the scale foundation.



9

Torque the Bolts

- 1 Use a torque wrench set to 600 N·m to tighten all bolts. You will hear a clicking sound when the bolts are torqued properly.
- 2 The recommended tightening sequence is to start at the center of the connection plate and move outward (as shown in the picture).



Precautions:



WARNING: Use a crane or forklift truck to lift the half-modules and assembled modules.

WARNING: Make sure that modules are properly blocked when they are in the raised position. Failure to block modules could result in bodily harm or property damage.

Contact Information:

► www.mt.com/contact